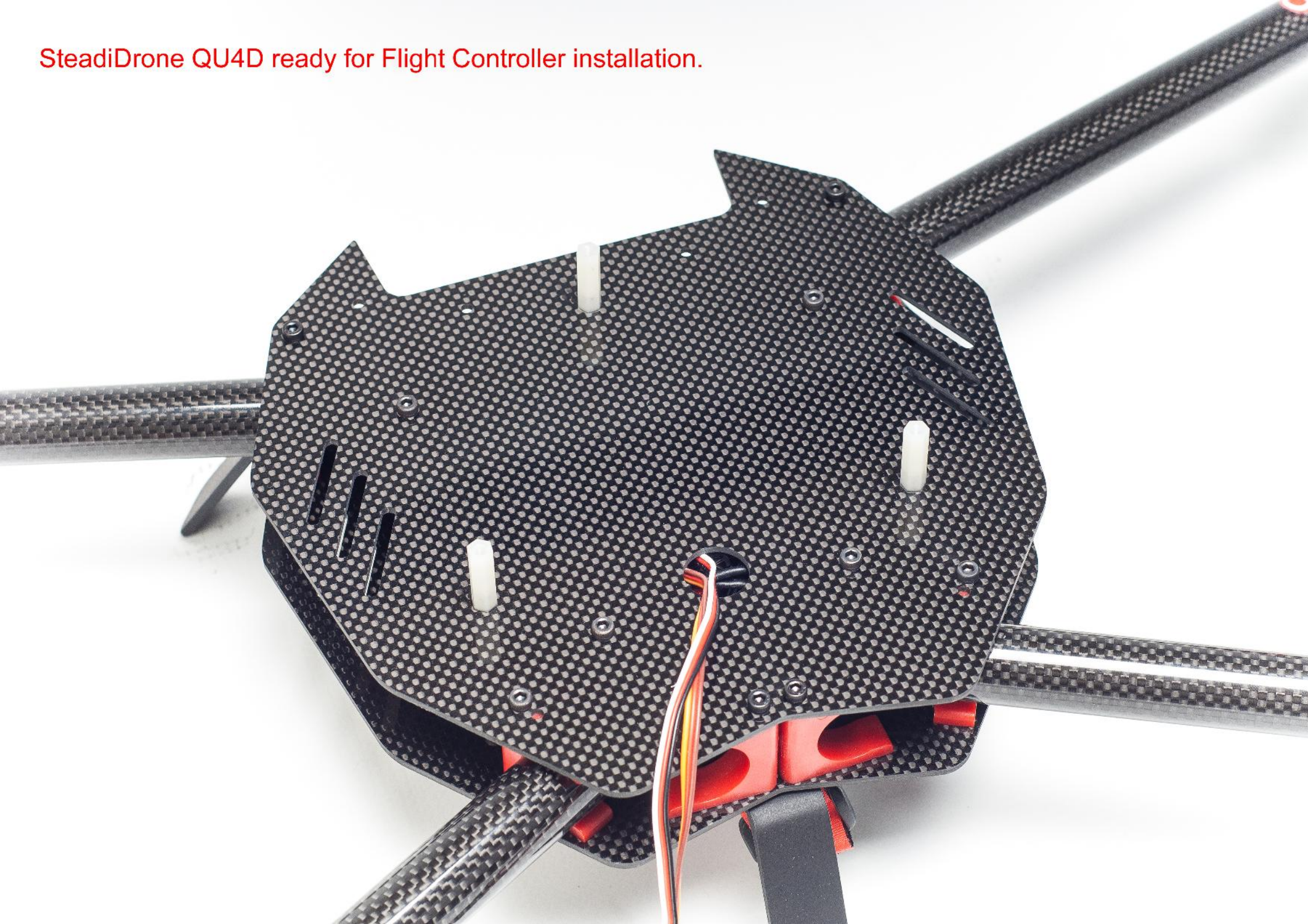
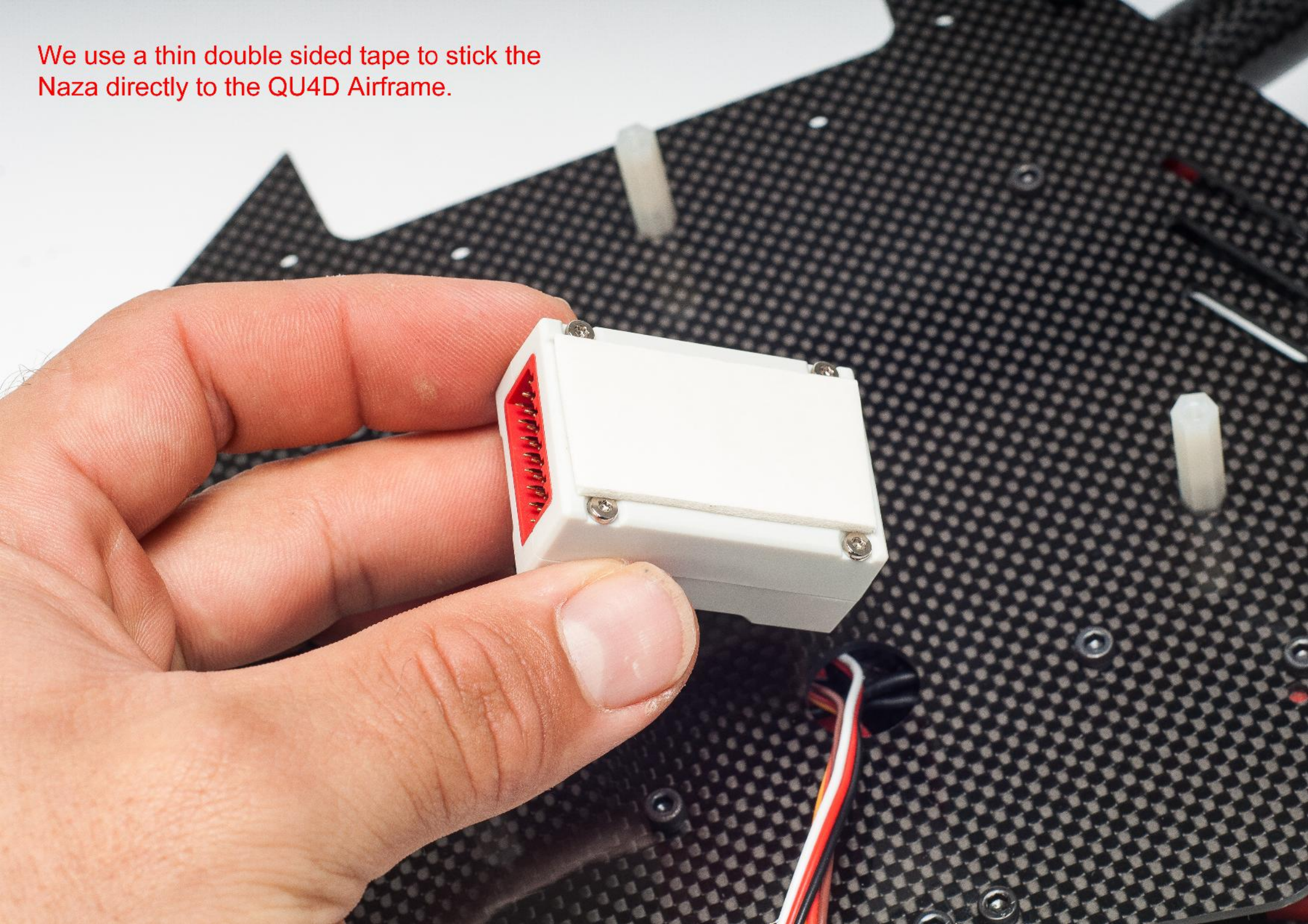




StediDrone QU4D ready for Flight Controller installation.

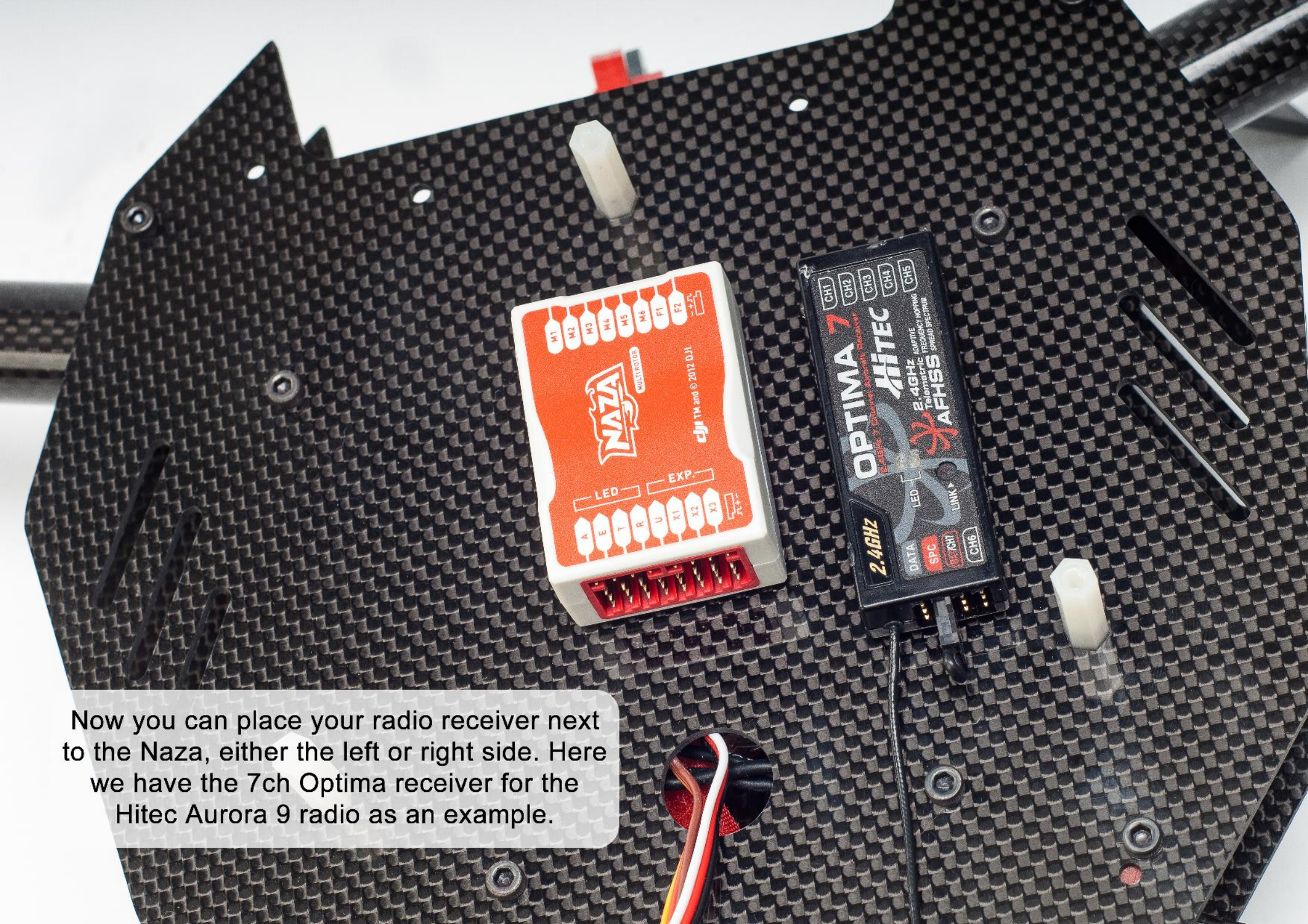


We use a thin double sided tape to stick the Naza directly to the QU4D Airframe.



Stick the Naza in the centre of the QU4D  
airframe as shown, leave enough space  
in front for the motor connectors.

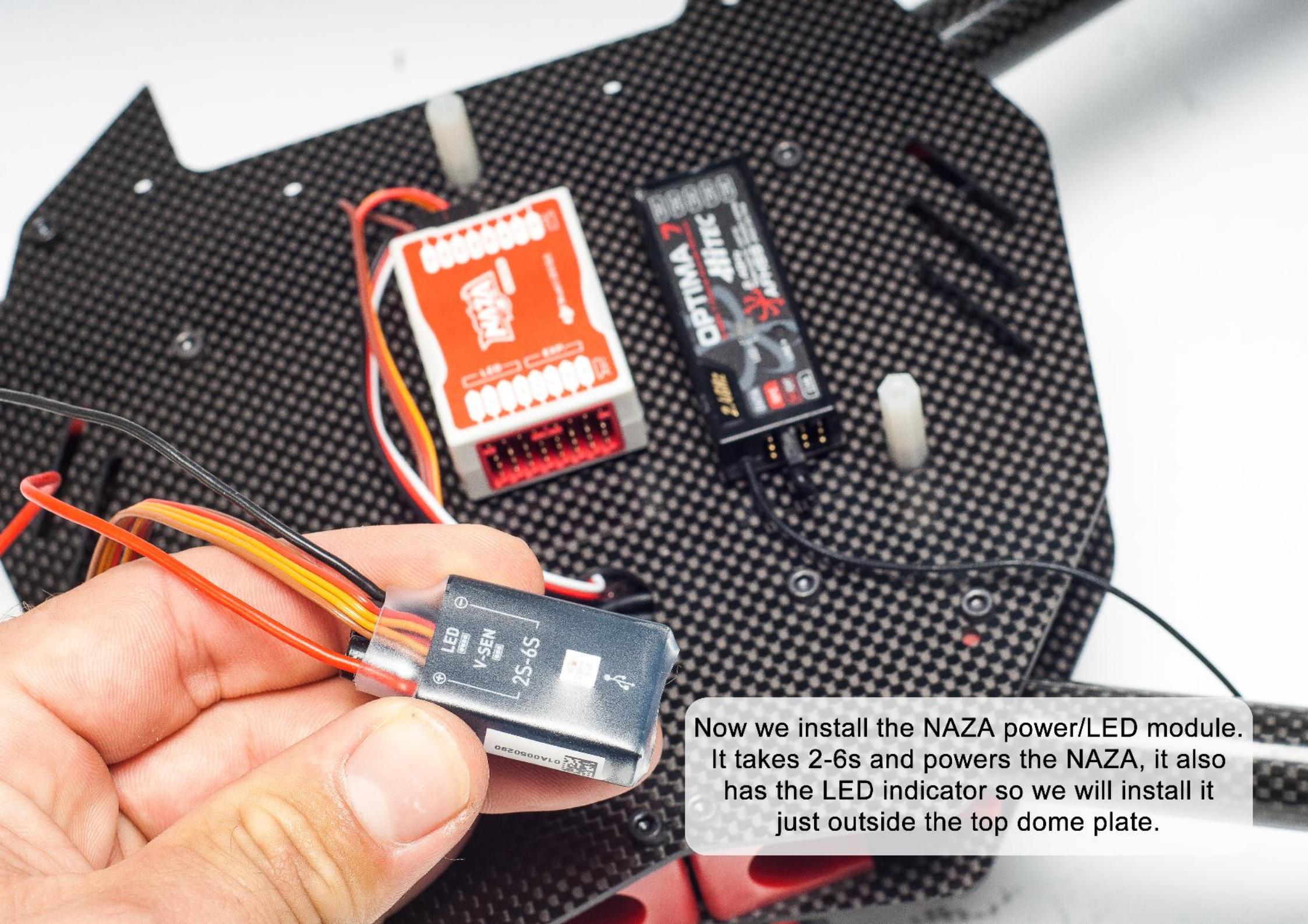




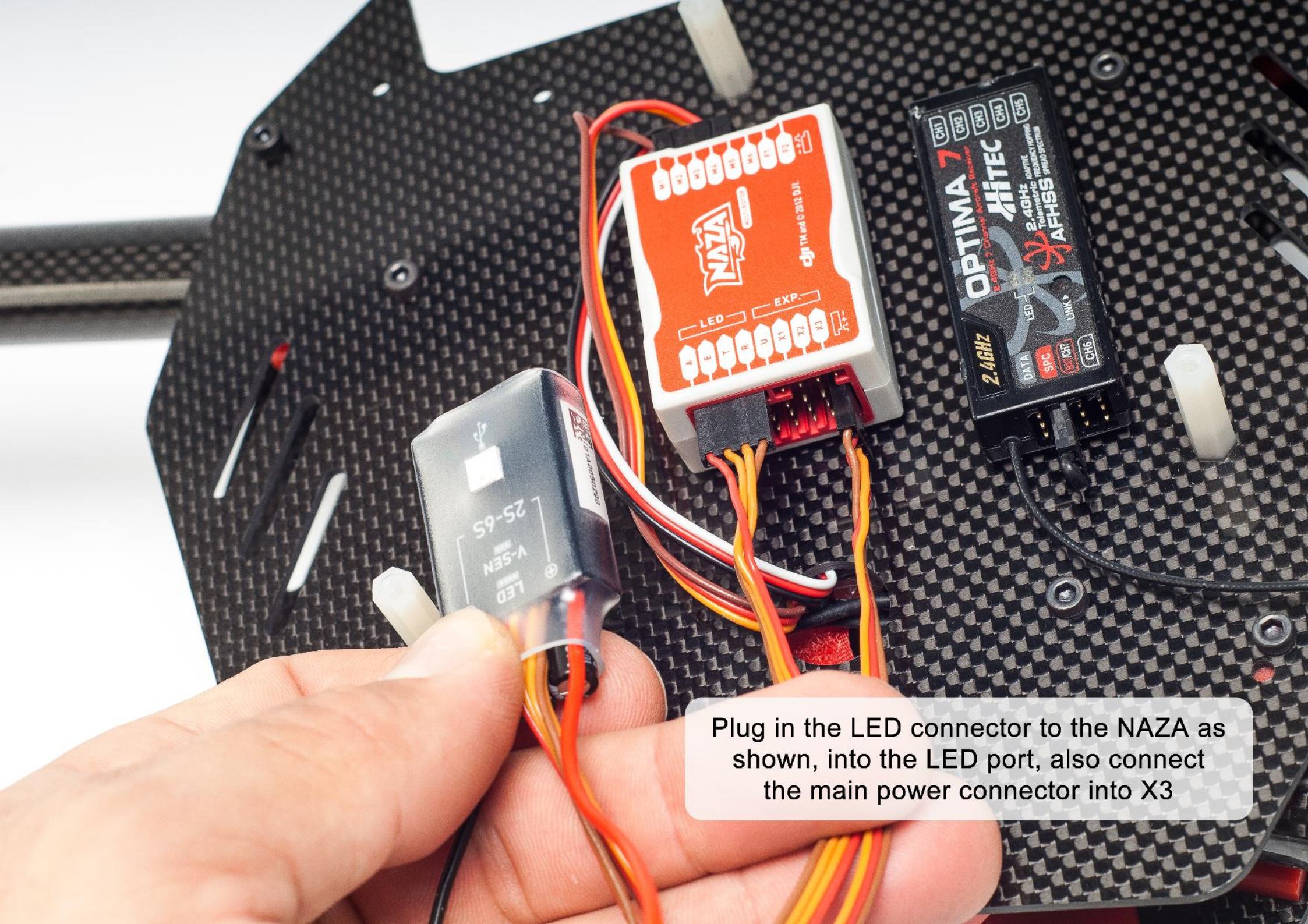
Now you can place your radio receiver next to the Naza, either the left or right side. Here we have the 7ch Optima receiver for the Hitec Aurora 9 radio as an example.



Plug in the ESC motor connectors as shown  
M1 - BROWN, M2 - WHITE, M3 - YELLOW  
and M4 - RED. You can optionally remove  
the +- wires from M2

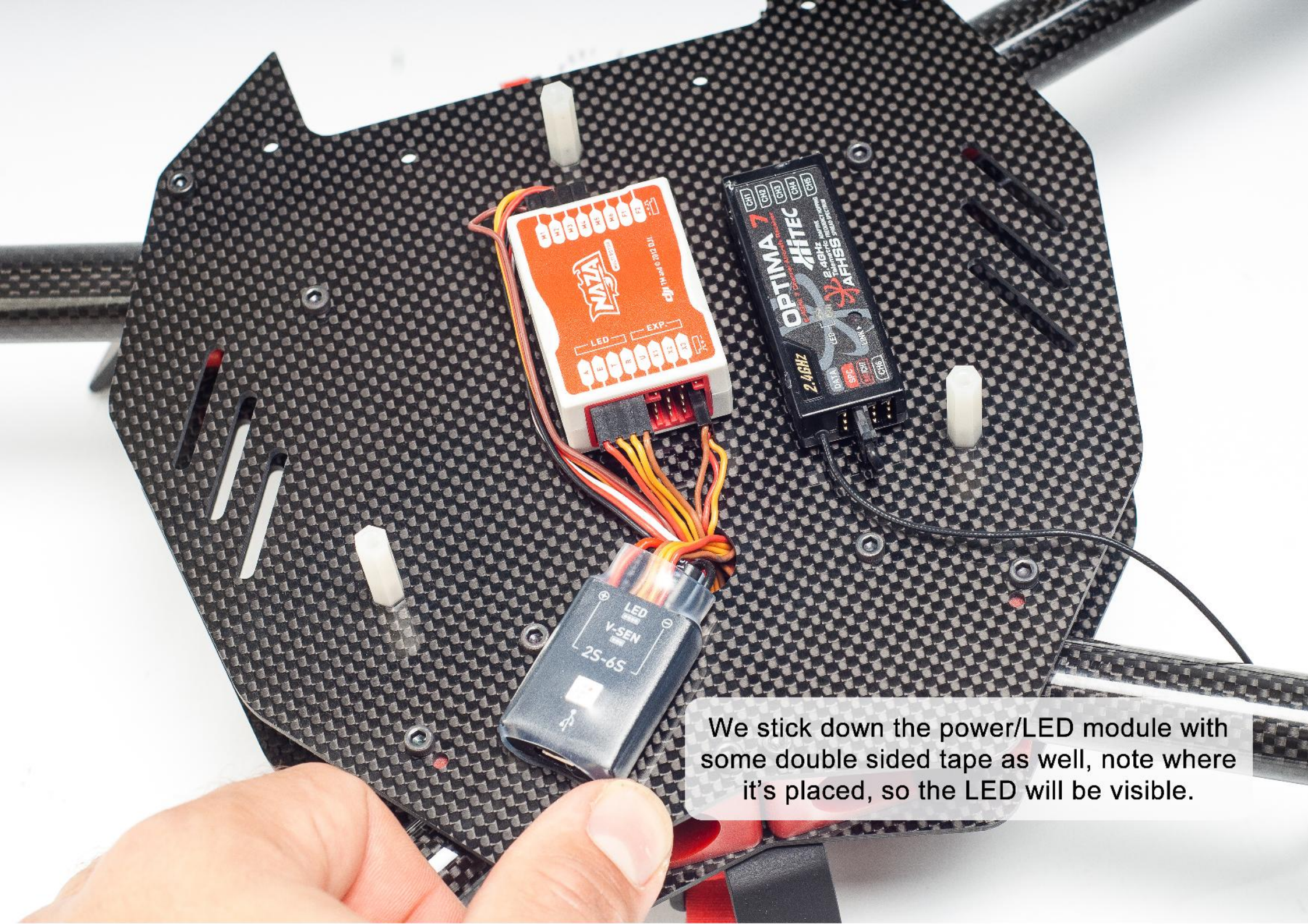


Now we install the NAZA power/LED module. It takes 2-6s and powers the NAZA, it also has the LED indicator so we will install it just outside the top dome plate.



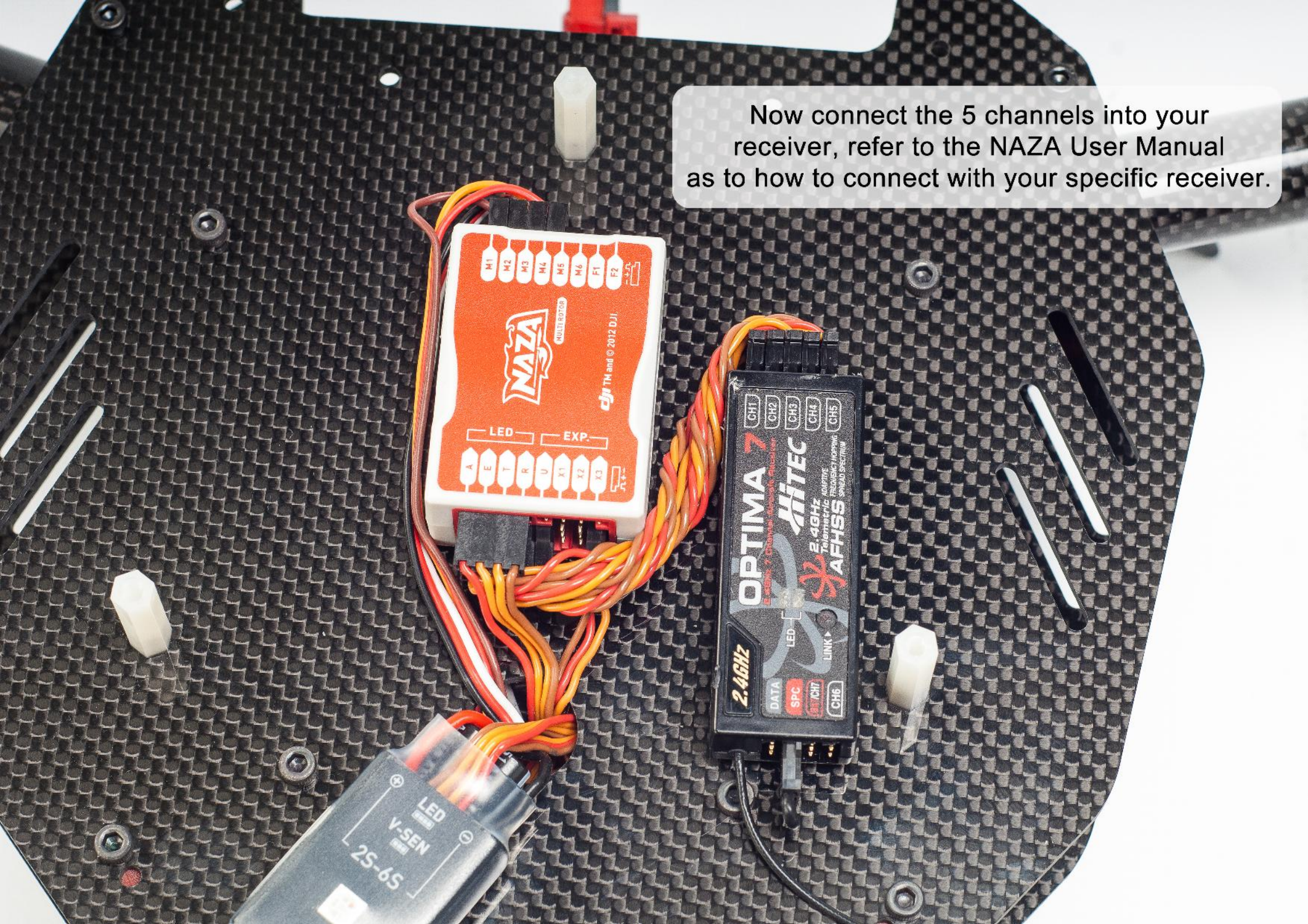
Plug in the LED connector to the NAZA as shown, into the LED port, also connect the main power connector into X3





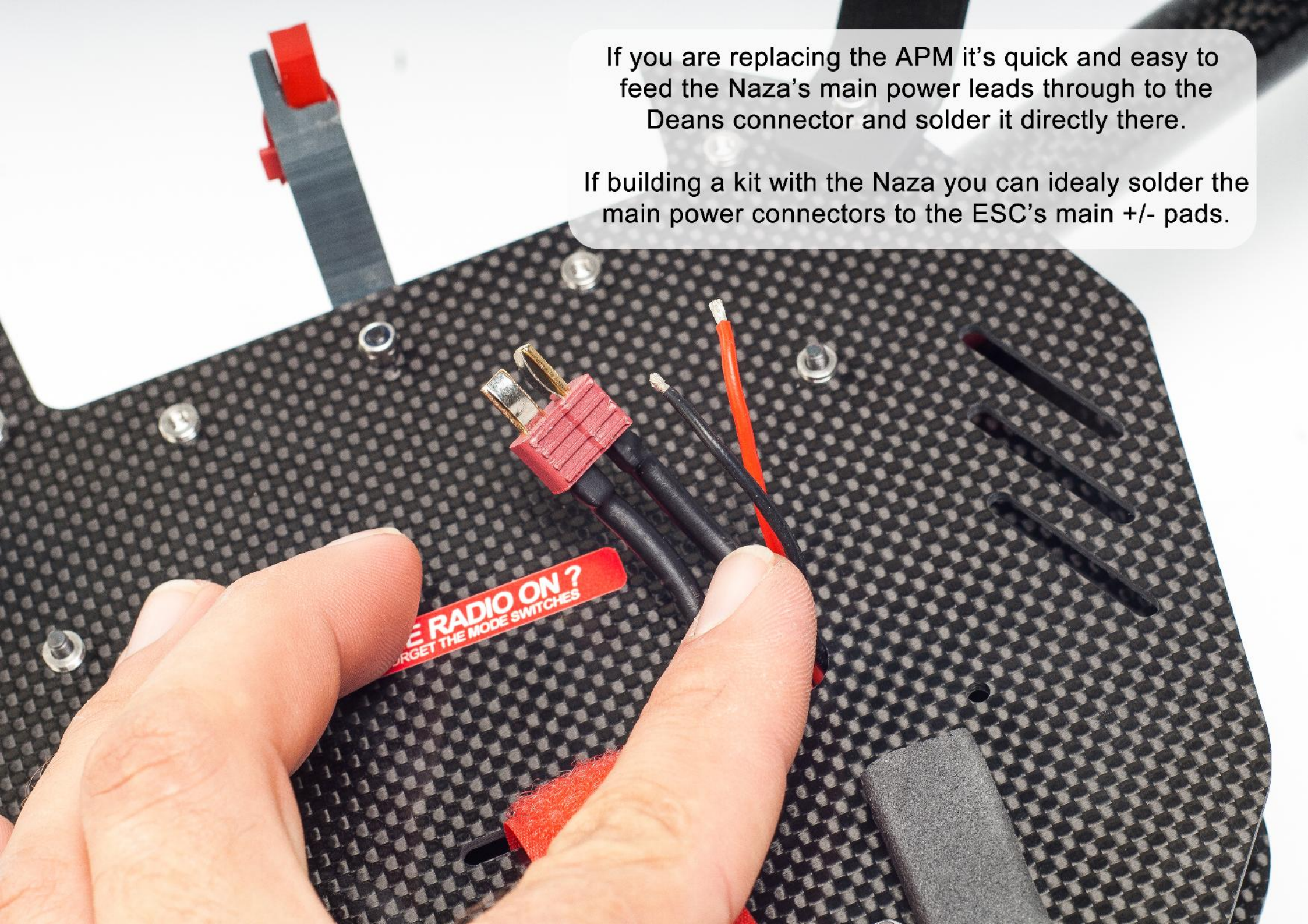
We stick down the power/LED module with some double sided tape as well, note where it's placed, so the LED will be visible.

Now connect the 5 channels into your receiver, refer to the NAZA User Manual as to how to connect with your specific receiver.

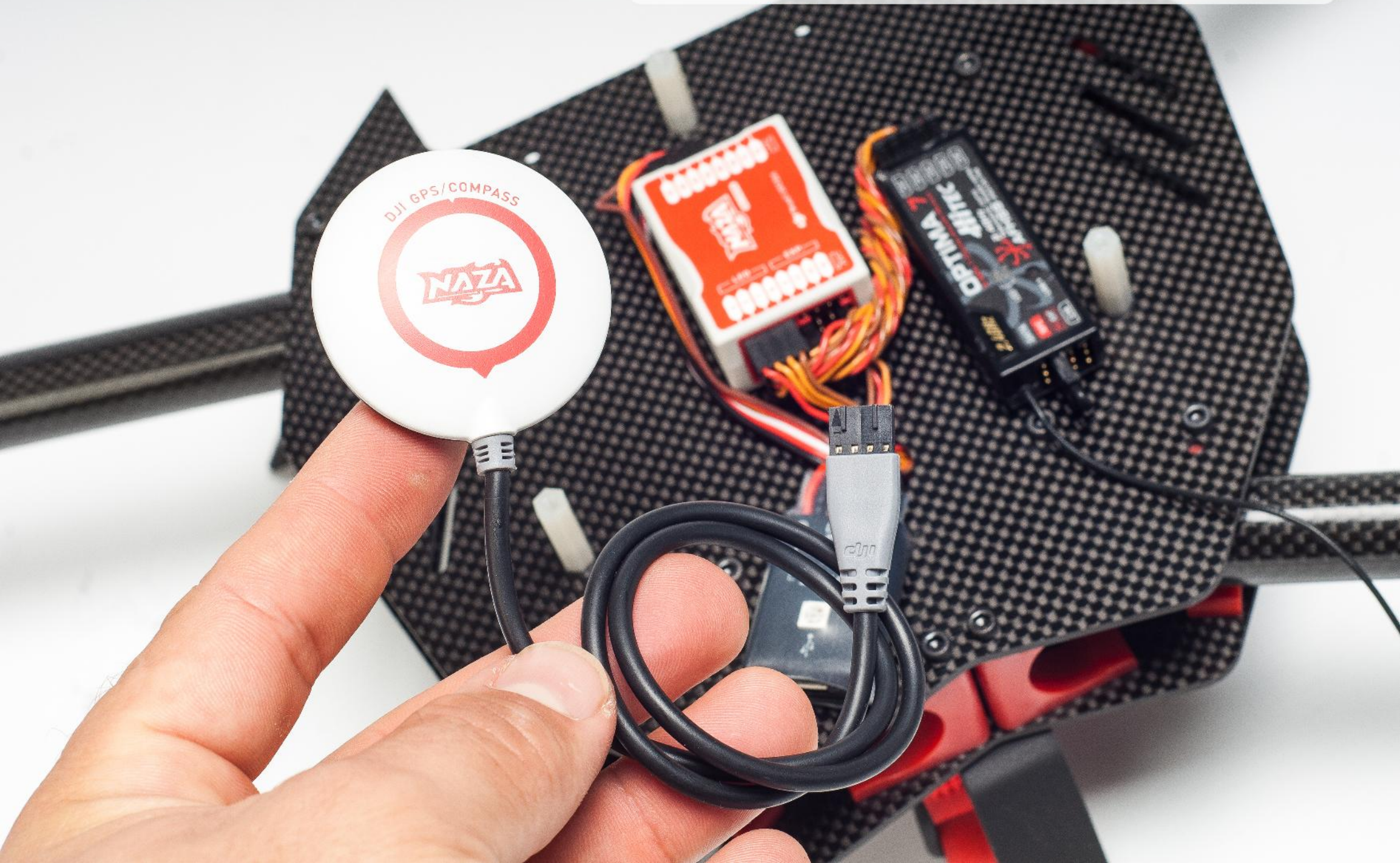


If you are replacing the APM it's quick and easy to feed the Naza's main power leads through to the Deans connector and solder it directly there.

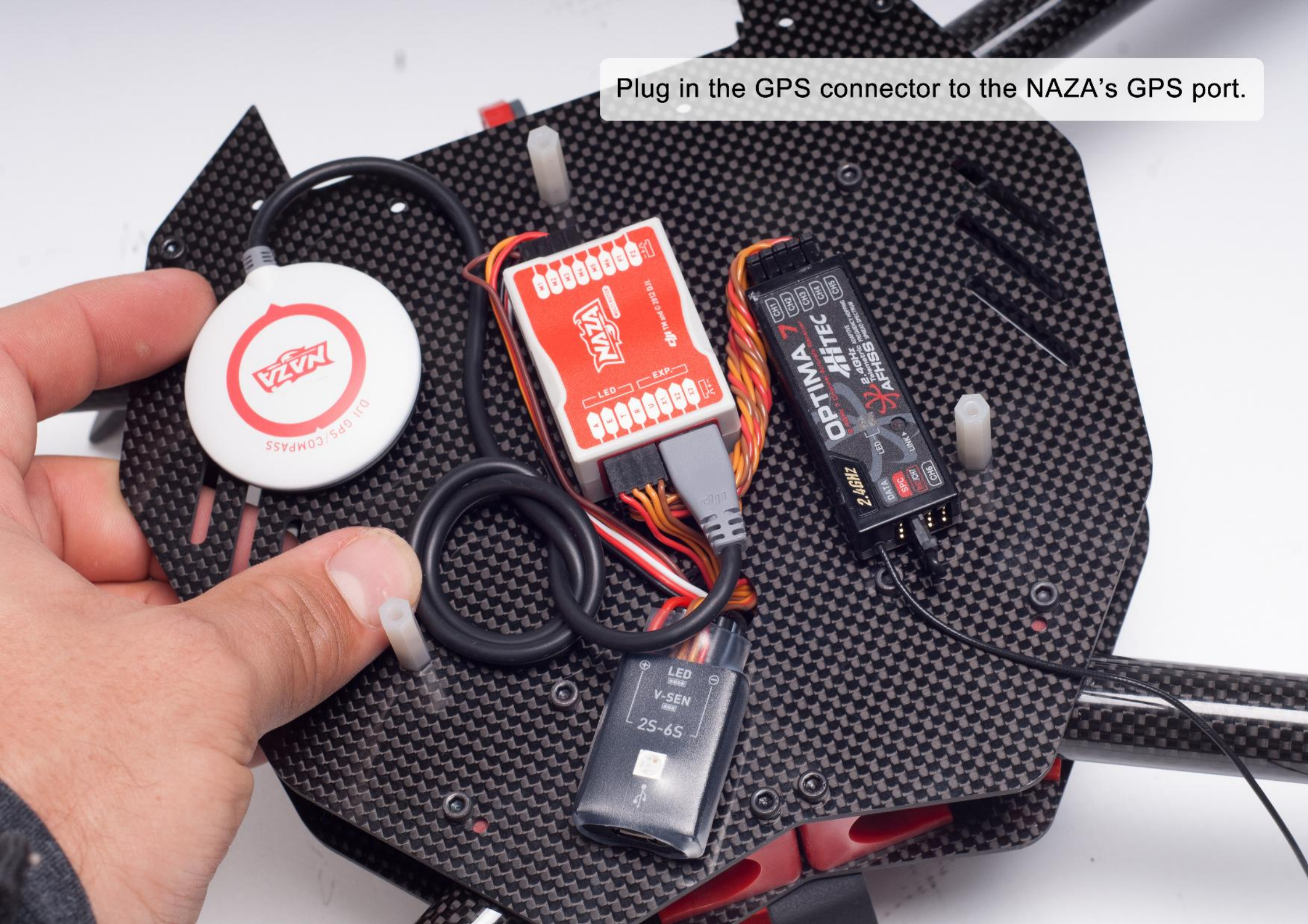
If building a kit with the Naza you can ideally solder the main power connectors to the ESC's main +/- pads.



Lastly we can plug in the GPS unit and finish the installation with the foam enclosure and top dome.



Plug in the GPS connector to the NAZA's GPS port.



For a neat installation we use the included double side tape for the Naza GPS and stick it directly to the top dome of the QU4D.



There we have it, a neat and effective NAZA Installation.



**Please Note:**  
This installation example is with the Naza V1/Lite, the V2 has an external LED module which we install to the rear landing gear leg, everything else is more or less the same.